



7-May-23 – Issue #3.

Copper Coast & Deise Cruise – 19th to 21st May 2023.

Dear Drascombers,

Welcome to the 2nd DA Copper Coast & Deise Cruise in the sunny southeast.

Below are the updated Joining Instructions for this year's event.

1. The cruise direction (East or West) is highly dependent on the forecasted winds for the weekend.
2. We'll confirm the direction for this year's cruise on the Wednesday night, 17th May after reviewing the forecast for that weekend.
3. We have chosen a weekend with good early morning & evening tides, these will facilitate easy launch & recovery at both ends, refer to tide table (Cobh, May 2023) on page 6.
4. I suggest that crews which need to, make accommodation bookings for Friday & also Sunday night if required, that they can cancel as necessary at short notice without penalty once the cruise direction is set:
 - a. If we start again at Polerone Quay, Mooncoin, we can camp by the Quay as we did last year, see photo on page 2.
 - i. Depending on when people arrive on Friday, we can consider moving cars & trailers over to Dungarvan that evening to make a quicker recovery on Sunday.
 - ii. I have been in contact with the local farmer & we have the use of his field adjacent near the Quay for car & trailer parking.
 - b. If we start in Dungarvan, there are plenty of accommodation options available at every price point. Camper van parking & overnight stays are available close to the town centre [Campervan parking, Dungarvan](#)
 - i. Car & trailer parking is available in the Co. Co. Staff Car Park which is open to the public over the weekends.
 - ii. Boats can be launched on Friday evening (2 slipways available, townside by the Lookout (W) or Abbeyside (E)) & moored overnight on the pontoon, courtesy of Dungarvan Harbour Sailing Club.
5. We will overnight on Saturday in Tramore as before, so I suggest that crews who plan to stay ashore arrange their accommodation well in advance.
 - a. Also, note that boats within the harbour will dry out overnight, so suggest liveaboards practise their boat balancing & sleeping arrangements in advance!
6. For dinner on Saturday evening, I propose to make a group booking for food at [The Ritz Bar](#) which is conveniently located at the top of the lane down to the Pier, we can confirm numbers closer to the event.
7. This is a long cruise, we covered 100km over the 2 days last year, so crews need to be prepared for long days with plenty of food & refreshments on board !

Attached are a few photos from last year's event.



1, Polerone Quay, camping Friday night.



2, Launching, Polerone Quay.



3, Saturday lunch stop at Duncannon.



4, taking the hard at Tramore.



5, Sunday break at Boatstrand.



6, the pontoon at Dungarvan

Joining Instructions based on an East to West direction (as we did last year), Skippers to interpret these accordingly if we go West/East this year:

PLEASE NOTE:

1. **SATURDAY IS A DAY LONG RIVER, ESTUARY & COASTAL CRUISE FROM MOONCOIN (START) TO TRAMORE (FINISH) (~30NM) WITH SOME STOPPING OFF and RECOVERY POINTS.**
 - a. **SKIPPER'S SHOULD ENSURE THAT THEY, THEIR CREWS & BOATS ARE PREPARED FOR SUCH A VOYAGE.**
2. WE WILL ONLY PROCEED WITH THE CRUISE IF CONDITIONS ARE CONSIDERED SUITABLE:
 - a. IF THEY ARE NOT, THEN WEATHER PERMITTING, WE WILL SAIL IN WATERFORD HARBOUR, RIVERS SUIR, BARROW/NORE. DECISION TO BE TAKEN ON FRIDAY EVENING OR SATURDAY MORNING.
 - b. ON SUNDAY WE CAN SAIL AGAIN WEATHER PERMITTING, CYCLE THE GREENWAY OR EXPLORE SOME LOCAL WALKS.
 - c. IN ALL CASES, THE DECISION TO SAIL IS SOLELY WITH THE SKIPPER.
3. **SUNDAY IS A DAY COASTAL CRUISE FROM TRAMORE (START) TO DUNGARVAN (FINISH) (~19NM) WITH LIMITED STOPPING OFF or RECOVERY POINTS.**

Programme (reference attached maps & charts, for information only, not to be used for navigation.). (N) references waymarks on the passage plans for each day, see pages 8, 9 & 10.

Friday, 19th May (Waterford City HW 19:10)

Arrive at Polerone Quay, Mooncoin, Co. Kilkenny. Discrete camper vans & a few tents or sleeping onboard boats will be ok at car park on Quay on Friday night.

Parking arrangements for cars & boat trailers over weekend confirmed, farmer is James Purcell, 086 386 6029, his house is X91YN60, park in field to left (N) of house.

Saturday, 20th May (Waterford City: LW 01:37, HW 07:29, LW 13:55, HW 19:48)

- 06:00 Launch on the morning tide.
- 07:15 Skipper's briefing at Polerone Quay.
- 07:30 Fleet underway down river to Waterford City on the ebb tide. Drop masts to get under Rice Bridge as you come into Waterford.
- 10:00 Arrive at Cheekpoint (5, LW 13:20) & tie on to new pontoon, time for coffee & cake from The Cake Dame (086 171 9723) located at the bottom of the hill. I'll tell her we are coming!
- 11:00 Depart Cheekpoint for Dunmore East via Passage East & Duncannon.
- 13:30 Arrive Dunmore East (11) for lunch, LW 13:05. Tie up on pontoon or anchor off.
- 14:30 Depart Dunmore East (11) and around Brownstown Head (13)
- 18:00 Arrive Tramore (Finish), tie up on the mooring lines in harbour. Note boats will dry out overnight. **(Tramore LW 13:05, HW 18:58)**

For dinner on Saturday evening, I propose to make a group booking for food at [The Ritz Bar](#) or The Pier Café which is conveniently located at the top of the lane down to the Pier, we can confirm numbers closer to the event.

Good food shopping, fuel, pharmacy, accommodation, amusements, etc. available in the town, all within 20 mins walk of the Pier.

For the liveboards, the Tramore Pier Association have offered use of one of their huts with basic cooking facilities, phone charging, etc. Toilets were also available last year, I will confirm.

Sunday 21st May (Tramore, LW 01:25, HW 07:15 *, LW 13:42)**

*** Ensure that your boat will not dry out on the falling tide in the morning !

09:30 Skipper's briefing on the Pier.

09:45 Fleet underway into Tramore Bay, then W to Dungarvan (Finish). Plenty of options for breaks, potentially Boatstrand (2) & Stradbally Cove (3).

16:00 Arrive Dungarvan, tie up on pontoon, refreshments on the Quay. "& Chips" on the Quay is highly recommended. **LW: 13:42, HW 19:37.**

2 slips available for recovery, the one at Abbeyside (E) is generally quieter.

No set plan for the evening, closer to the time we can book a venue for drinks & dinner if people are interested, plenty of options.

The Dungarvan Harbour Sailing Club clubhouse on the Quay will be available on Sunday evening.

Good food shopping, fuel, pharmacy, accommodation, etc. available in the town, all within 20 mins walk of the Quay/Pontoon.

Last year we had a few non-sailors who shuttled drivers back to Mooncoin to collect their cars. Will see what we can arrange closer to the weekend.

Alternatively, to get back to Mooncoin take Bus Eireann (Route 40, hourly service, takes 50 mins) back to Waterford & then take another bus (Route 55 Waterford to Limerick) or taxi to collect their cars & trailers in Mooncoin and then recover at slip-ways in Dungarvan on the Sunday evening or Monday morning tides.

Monday 22nd May (Dungarvan LW 02:03, HW 07:55, LW 14:18, HW 20:15.

For those who are interested, there is an option to cycle the Waterford Greenway back to Dungarvan, its 42km, allow 3.5 to 4.5h including a halfway fuel break at Kilmacthomas, see link below for details.

<https://www.discoverireland.ie/waterford-greenway/cycling-the-waterford-greenway>

Plenty of places to stop off & see, the gardens at Mount Congreve are highly recommended.

Rental bikes will need to be ordered in advance, **please book your own in advance**, see link below for details, electric bikes are available:

https://www.waterfordgreenwaybikehire.com/?gclid=Cj0KCQjw0umSBhDrARIsAH7FCocSrWRfbg1N_DQyyUdquWb3QOmnHol7rQDdZ1nBSDml1wmoweXCX9QaAuijEALw_wcB

Sailing Instructions

Sailing Area

The Admiralty Leisure Folio for the area is "Ireland - South Coast, Waterford to Kinsale", SC 5622.

The eOceanic on-line almanac gives a useful summary of the Co. Waterford coast at this link:

<https://www.eoceanic.com/sailing/harbours/europe/ireland/waterford/>

Communication

Information will be given:

- + At the Skipper's Briefing in the morning on each day.
- + On the water by radio calls to "ALL DRASCOMBES" on VHF Channel 72.
- + By WhatsApp messages to participants' mobile phones using a group text.

Coastguard Radio

The area is covered by:

- Minehead Coast Guard Radio on Ch 16, 67, **03**, DSC 70.
- Rosslare Coast Guard Radio on Ch 16, 67, **05**, DSC 70.

Safety

- Each skipper is responsible for the safety of their boat and crew.
- If conditions are such that you are uncomfortable, then decision to sail or not rests solely with you.
- The rally organizers do not intend to encourage avoidable discomfort by sailing in unsuitable conditions, rather to organize alternative entertainment ashore for participants in the case of inclement weather.
- If you are separated from the fleet or observe a vessel in difficulty, please inform Roy Johnston by SMS at +353 87 2385389 or on the VHF working channel, CH 72.

Hazards

Below is a short list of the sailing hazards that visiting Skippers should be aware of. Skippers should review the relevant charts & other resources to familiarise themselves with the area.

- Low bridges above Waterford City.
- V strong currents off the Marina in Waterford City.
- Passage East to Ballyhack ferry.
- Commercial shipping & leisure traffic in Waterford estuary.
- Traffic (other boats & swimmers) at Dunmore East Harbour.
- Traffic (other boats & swimmers) at Tramore Pier.
- Potential lee shore of the Waterford Coast, multiple rocks & shallows.
- Carrickapane & Carricknamon rocks at entrance to Dungarvan Harbour.
- Traffic (other boats & swimmers) at Helvick Pier.
- The Gainers shallows, keep E of the Helvick E Cardinal Mark.
- Shallow channel into Dungarvan from the bay, follow the buoyed channel, no shortcuts!
- Strong currents in the entrance to Dungarvan, between Cunnigar Spit & Abbey Point.
- Extensive shellfish farming on E side of Cunnigar Spit, note the Special Marks.
https://dhsc.ie/wp-content/uploads/2018/03/dungarvan_bay_low_ater.jpg
- https://dhsc.ie/wp-content/uploads/2018/03/dungarvan_harbour_shell_fish_area.pdf

Safe Havens

Below is a short list of the potential safe havens that visiting Skippers should be aware of. Skippers should review the relevant charts & other resources to familiarise themselves with the area.

- Waterford City Marina, no slip for recovery.

- Cheekpoint, road access & slipway (high water only)
- Duncannon Pier, road access
- Dunmore East Harbour, road access & slipway, all states of tide, but gets v busy.
- Tramore backstrand, channel on the E side
- Tramore Pier, W of the bay, road access & slipway.
- Boatstrand, road access & slipway
- Bunmahon Bay, river on the E side
- Stradbally Cove, river on the E side
- Helvick Piers, New (E) & Old (W)
- Ballinacourty Pier, road access, no slip for recovery

Rescue Assets

Below is a short list of the rescue assets that visiting Skippers should be aware of. Skippers should review the relevant charts & other resources to familiarise themselves with the area.

- Waterford Marine SAR – ILBs
- RNLI ALB – Dunmore East, Shannon Class
- RNLI ILB – Tramore, D Class
- Bonmahon Lifeboat (CRBI)
- RNLI ILB – Helvick, Atlantic Class
- Coastguard Helicopter R117, Waterford Airport.

Tides for Cobh in May 2023 (source Irish Sailing website):

Cobh - May 2023			
01 03:15 3.2m 09:39 1.3m Mon 15:38 3.2m 21:58 1.2m	02 04:02 3.4m 10:25 1.1m Tue 16:21 3.5m 22:42 0.9m	03 04:42 3.7m 11:06 0.9m Wed 17:00 3.7m 23:24 0.7m	04 05:21 3.9m 11:46 0.7m Thu 17:38 3.9m
05 00:04 0.6m 05:58 4.0m Fri 12:24 0.5m 18:15 4.1m	06 00:42 0.4m 06:34 4.1m Sat 13:01 0.4m 18:52 4.2m	07 01:20 0.4m 07:12 4.1m Sun 13:39 0.4m 19:31 4.2m	08 02:00 0.4m 07:51 4.1m Mon 14:18 0.5m 20:12 4.1m
09 02:41 0.5m 08:34 4.0m Tue 15:01 0.6m 20:59 4.0m	10 03:28 0.7m 09:23 3.8m Wed 15:49 0.7m 21:51 3.8m	11 04:19 0.9m 10:17 3.6m Thu 16:43 0.9m 22:51 3.6m	12 05:21 1.1m 11:22 3.4m Fri 17:51 1.1m
13 00:04 3.4m 06:36 1.2m Sat 12:40 3.3m 19:08 1.1m	14 01:22 3.4m 07:54 1.1m Sun 13:58 3.4m 20:26 1.0m	15 02:35 3.5m 09:05 1.0m Mon 15:05 3.5m 21:32 0.9m	16 03:36 3.7m 10:04 0.8m Tue 16:00 3.7m 22:27 0.7m
17 04:26 3.8m 10:54 0.7m Wed 16:49 3.9m 23:17 0.6m	18 05:13 4.0m 11:40 0.6m Thu 17:33 4.0m	19 00:01 0.5m 05:54 4.0m Fri 12:21 0.5m 18:13 4.1m	20 00:40 0.5m 06:32 4.0m Sat 12:58 0.5m 18:51 4.0m
21 01:18 0.5m 07:09 4.0m Sun 13:34 0.6m 19:29 4.0m	22 01:55 0.6m 07:47 3.9m Mon 14:10 0.7m 20:06 3.9m	23 02:31 0.8m 08:24 3.7m Tue 14:46 0.8m 20:45 3.7m	24 03:09 0.9m 09:03 3.5m Wed 15:24 1.0m 21:26 3.5m
25 03:49 1.1m 09:46 3.4m Thu 16:07 1.1m 22:12 3.4m	26 04:36 1.3m 10:35 3.2m Fri 16:56 1.3m 23:06 3.2m	27 05:31 1.4m 11:32 3.1m Sat 17:54 1.4m	28 00:08 3.1m 06:33 1.4m Sun 12:36 3.0m 18:58 1.4m
29 01:11 3.1m 07:37 1.4m Mon 13:40 3.1m 20:02 1.3m	30 02:13 3.2m 08:38 1.3m Tue 14:39 3.2m 21:02 1.2m	31 03:08 3.4m 09:32 1.1m Wed 15:31 3.4m 21:54 1.0m	

Variations from Cobh are below FYI, these have already been applied to the times quoted for each day:

- Dungarvan Harbour + 0:08
- Tramore: + 0:07
- Cheekpoint + 0:21
- Waterford City + 0:57

Daily catering

Each Day's sailing will include a break ashore or at anchor for a picnic/cookout and for activities and socialising. Bring the food and cooking equipment you need in your boat each day.

Registration

Each participating skipper is required to complete and sign a Rally Application form. Please understand this minor bureaucratic request. The Rally registration fee will be €10, please have exact change available on Friday evening.

Pontoon & Marina Fees:

Skipper's will be responsible for settling their own fees with the operators, I will advise the fees & any booking requirements once known.

Merchandise

Not planning to provide these for this event.

Local sea charts

Not planning to provide these for this event, please ensure that you have your own resources for coastal & estuary navigation.

Campervans

Camper vans are seen regularly in Dungarvan by the bandstand & Tramore on the Promenade. I do not know the situation at Cheekpoint or Waterford City.

Accommodation:

Plenty of accommodation to suit all price points is available in Dungarvan, Tramore & Waterford City.

Saturday, 28th May (Waterford City: HW 05:37, LW 12:00, HW17:56), for information only, not to be used for navigation.

DA Cruise, 28-May-22

22.3NM 5h34M 5.6L

0.8NM	12m17s	0.2L	12m17s
0.9NM	12m51s	0.2L	25m08s
1.0NM	15m28s	0.3L	40m37s
0.9NM	13m56s	0.2L	54m34s
1.1NM	16m18s	0.3L	1h10M
0.5NM	7m40s	0.1L	1h18M
1.2NM	18m30s	0.3L	1h37M

Easy View

Boat Settings

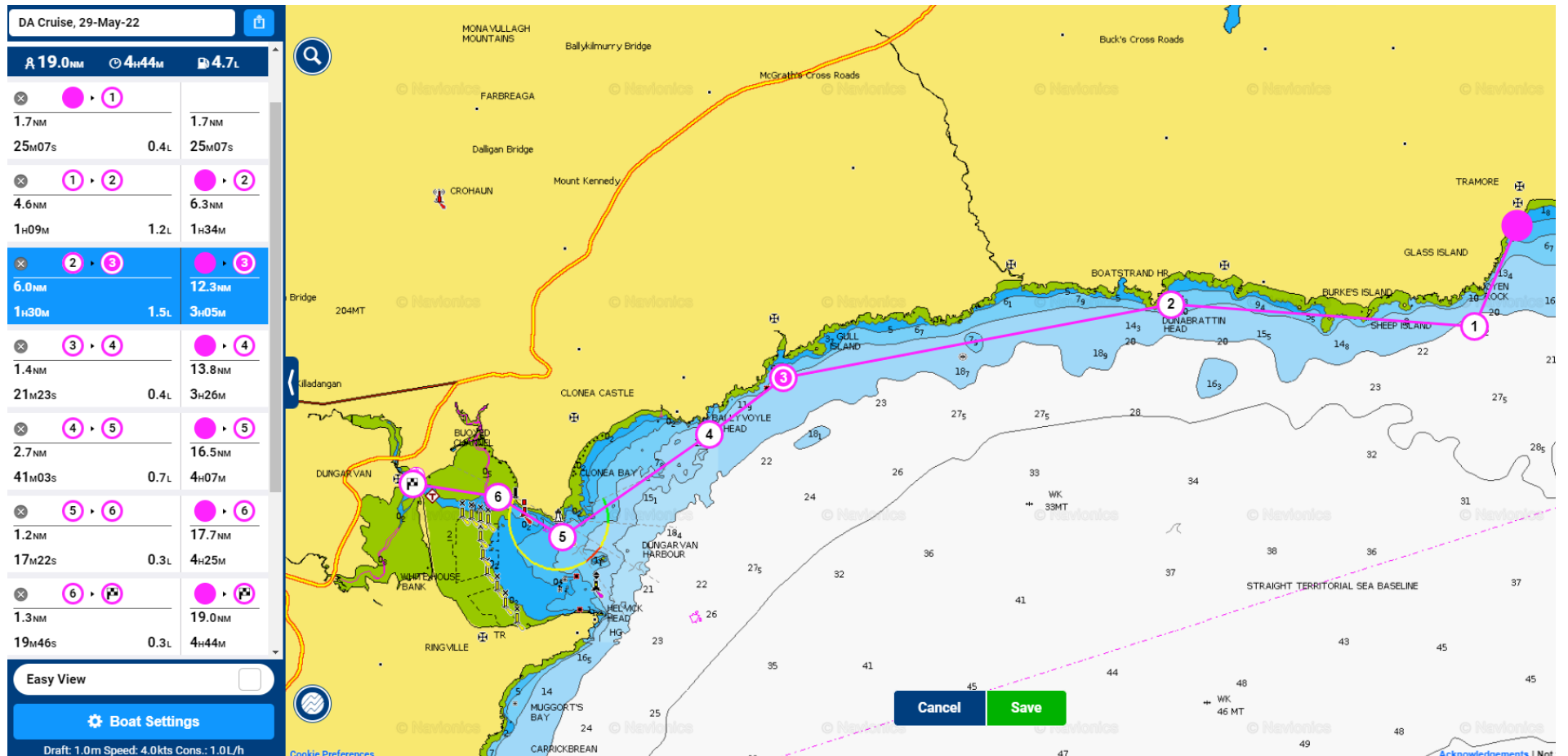
Draft: 1.0m Speed: 4.0kts Cons.: 1.0L/h

[Cookie Preferences](#)

The map shows a pink route starting at Cheekpoint (1) and ending at Tramore (13). The route passes through various points in the harbour, including Queen's Channel, Faithlegg, East Passage, Drumroe Bank, Creadan Bank, and Dunmore East. Other locations shown include Ballynacaw, Glass Island, Sheep Island, and Slade. The map also displays depth contours and various navigational markers.

DA Cruise, 28-May-22		
× 7 ▶ 8 2.0 NM 30M11s 0.5L	● ▶ 8 8.5 NM 2H07M	
× 8 ▶ 9 0.6 NM 8M58s 0.1L	● ▶ 9 9.1 NM 2H16M	
× 9 ▶ 10 2.0 NM 30M11s 0.5L	● ▶ 10 11.1 NM 2H46M	
× 10 ▶ 11 3.5 NM 52M16s 0.9L	● ▶ 11 14.6 NM 3H38M	
× 11 ▶ 12 1.7 NM 25M10s 0.4L	● ▶ 12 16.3 NM 4H03M	
× 12 ▶ 13 3.6 NM 53M40s 0.9L	● ▶ 13 19.8 NM 4H57M	
× 13 ▶ 14 2.4 NM 36M35s 0.6L	● ▶ 14 22.3 NM 5H34M	

Sunday 29th May (Dunmore East, HW 05:39, LW 11:56. Dungarvan HW 17:51), for information only, not to be used for navigation.



Monday 30th May (Waterford City: HW 07:03, LW 13:27, HW 19:21), Waterford Greenway.

